

NORDLYS

HOME & LIVING

Notice de montage

Montageanleitungen

Instrucciones de montaje

Istruzioni di montaggio

TETE DE LIT HORSENS

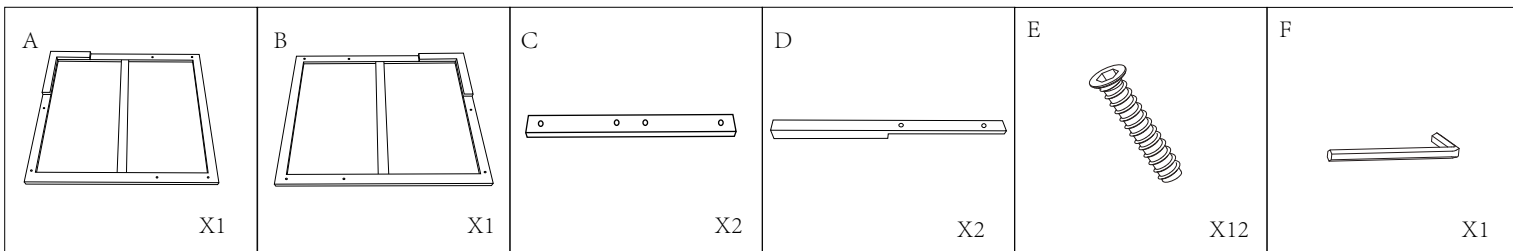
HEADBOARD HORSENS

CABECERO HORSENS

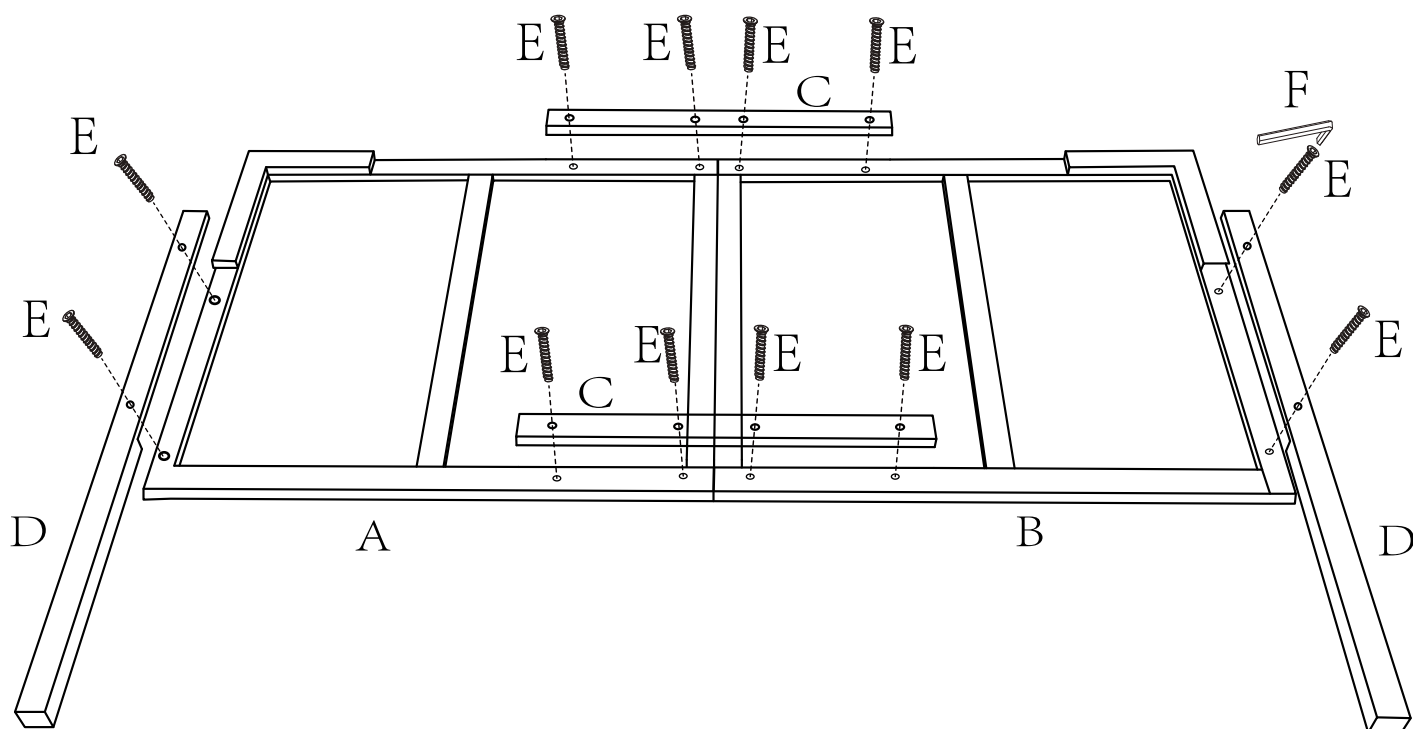
TESTIERA HORSENS

KOPFTEIL HORSENS

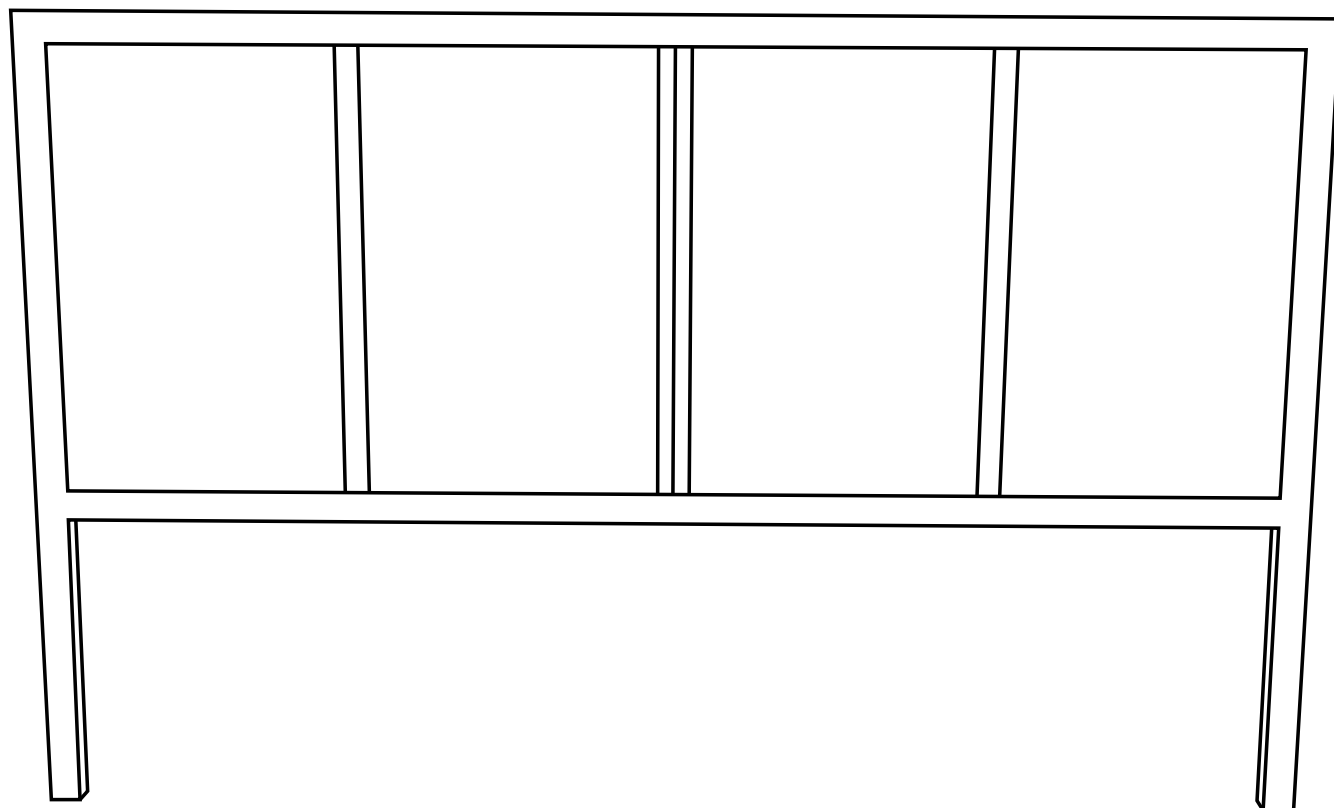




1



2



Maintenance Tips

1. **Regular Cleaning:**
 - Use a soft, dry cloth to dust the headboard regularly.
 - For deeper cleaning, use a cloth slightly dampened with warm water and mild soap. Avoid abrasive cleaners that could damage the veneer.
2. **Protecting Against Liquids:**
 - Wipe up liquid spills immediately to prevent stains and water infiltration that can damage the wood.
 - Use coasters, tablecloths, and placemats to protect the surface from drink and food stains.
3. **Avoid Heat Exposure:**
 - Do not place hot objects directly on the headboard. Use trivets to protect the surface.
 - Avoid placing the table near direct heat sources such as radiators or fireplaces.
4. **Protect from Direct Sunlight:**
 - Direct sunlight can cause the wood to fade. Place the table in an area protected from direct sunlight or use curtains or blinds to diffuse the light.
5. **Use Protective Products:**
 - Regularly apply a protective product for wood, such as wax or suitable oil. This can help maintain the wood's shine and provide an extra layer of protection.
6. **Avoid Scratches:**
 - Use coasters and placemats to prevent scratches from dishes, utensils, or other objects.
 - Be careful not to drag or slide heavy objects across the headboard.

Precautions:

1. **Humidity Control:**
 - Maintain a stable humidity level in the room where the headboard is located. Significant humidity fluctuations can cause cracks or warping of the veneer.
2. **Repairs:**
 - For minor scratches or small chips, use specific wood repair products to touch up the damaged areas.
 - For more significant damage, it is best to consult a professional to avoid worsening the problem.
3. **Careful Handling:**
 - When moving the headboard, lift it rather than dragging it to avoid damaging the veneer or joints.

Long-Term Maintenance:

- **Periodic Renovation:**
 - Every few years, consider refinishing the table by lightly sanding the surface and applying a new coat of varnish or wood oil

